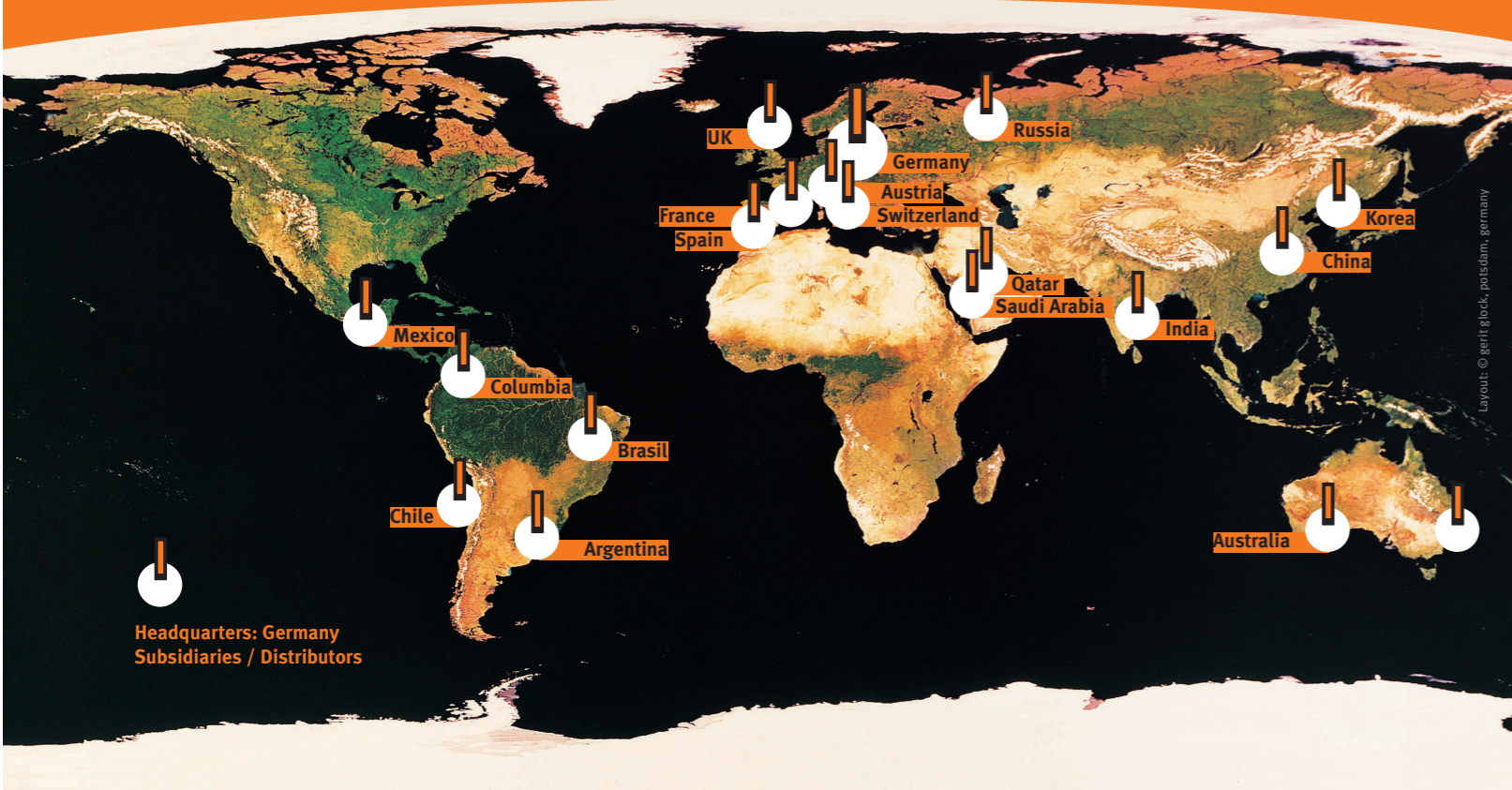


trenching | the | world

trenching | the | world



erkat has a worldwide network consisting of distributors and subsidiaries. For more information, please contact Mr. Ertmer at +49 3695 603466.

Presented by:



erkat | spezialmaschinen | service | gmbh
jeremiasstrasse 4
d-36433 leimbach
germany
phone +49 3695 60 34 66
fax +49 3695 60 34 67
e-mail info@erkat.de
internet www.erkat.de

erkat | spezialmaschinen | service | gmbh
service | production
ulmenstrasse 3
d-36469 hämbach
germany
phone +49 3695 60 34 66
fax +49 3695 60 34 67
e-mail info@erkat.de
internet www.erkat.de

This catalogue is used to describe our products and the accessories. The information contained in it does not imply any certified properties or indicate any suitability for certain or assumed purposes. Technical changes are reserved without prior announcement. We disclaim any liability arising from the illustrations and information in the catalogue and from all our representatives.

January 2010



construction | steel industry | special cutters
mining | tunneling | forestry



EXACTOR PATCH PLANING TECHNOLOGY

**BROADENS
YOUR HORIZONS**

**PATCH PLANING ATTACHMENT
FOR EXCAVATORS AND
BACKHOE MACHINES**



construction | steel industry | special cutters
mining | tunneling | forestry

erkat | exactor patch planing technology

trenching | the | world

The **EX RANGE** of Erkat Patch Planers are manufactured in Germany and designed for the accurate planing of asphalt, concrete and stone. By the end of 2010, the Exactor range will consist of patch planers available in 4 sizes, suitable for use on excavators from 6 to 40 tons. The cutter drums for each machine will be available with a choice of tools and cutting widths.

made in germany

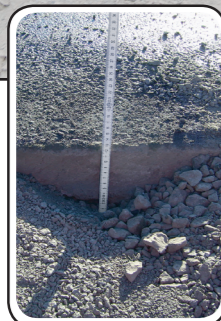
The **Exactor** can work on horizontal, vertical and inclined surfaces and can even be used upside down to plane the roofs of tunnels.



The machines are ideally suited for the repair of asphalt surfaces as well as work requiring tight tolerances such as the removal of millimetre depths of contaminated concrete or screed floor surfaces.

To provide the best performance on a range of carrier vehicles, a choice of **Exactor** hydraulic motor specifications are available to suit each application.

The mechanical, or optional hydraulic, system for depth control allows the cutting depth to be set at any figure from 0 to 200 mm, depending on model size. If a suction device should be used to extract the cut material, a modified housing can be supplied specifically designed for this purpose.



View from below of the cutter drum as used for planing concrete.

Planing of flat edges to accuracy measured in millimetres



View from the front of the cutter drum as used for planing concrete.

Applications:

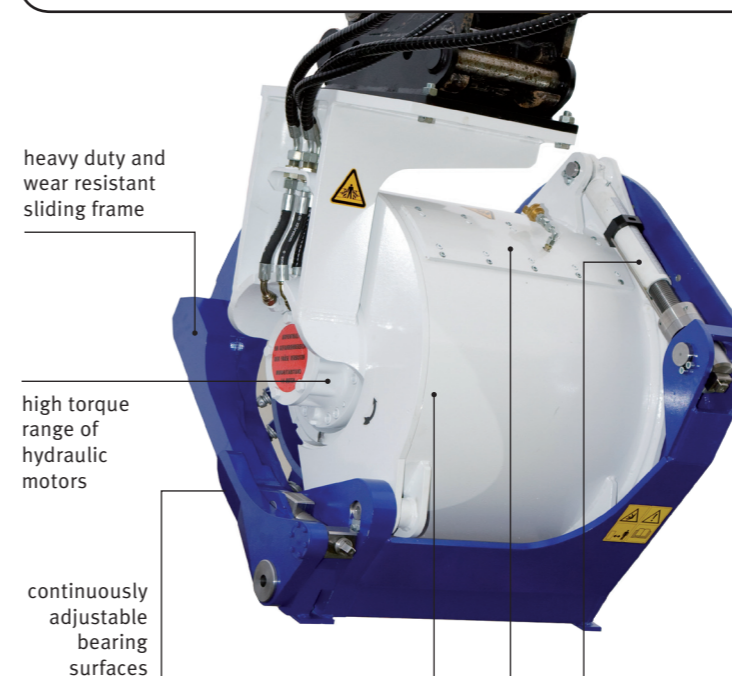
- Planing concrete
- Planing asphalt surfaces
- Profiling excavations in rock



SERIE EX

for excavators and backhoe machines

	Units	EX 30	EX 45	EX 45 HD	EX 60	EX 60 HD
Standard width	mm	300	450	450	600	600
Max. cutting depth	mm	120	150	150	190	190
Recommended rotation speed	RPM	180	150	110	160	100
Recommended oil flow	l/min	65 - 100	100 - 125	130 - 170	130 - 180	180 - 210
Max. oil flow	l/min	100	125	170	200	210
Max. oil pressure	bar	350	350	350	350	350
Recommended min. oil flow	l/min	60	80	130	150	180
Approx. weight	kg	400	800	850	1300	1350
No. of picks	qty	35	45	45	59	59
Recommended excavator weight	Tons	6 - 10	8 - 15	12 - 18	12 - 20	18 - 23
Max. hydraulic power	KW	30	45	65	50	80
Available from		18.04.2010	30.07.2010	31.07.2010	28.02.2010	31.03.2010



heavy duty and wear resistant sliding frame

high torque range of hydraulic motors

continuously adjustable bearing surfaces

continuously variable depth adjustment

housing with integrated water jets

robust, wear resistant drum housing



housing locking mechanism

Additional Features

- Standard cutting widths from 30 – 60 cm
- High torque motors providing high productivity
- Modular construction providing easily adjustable torque / rotation speed ratios
- Exchangeable hydraulic motors
- Heavy duty, wear resistant sliding frame
- Continuous mechanical adjustment of cutting depth (hydraulic adjustment optional)
- Optimal positioning of the cutting tools for a smooth cutting action and cutting surface
- high productivity and good quality cut edges
- Optimum wear rates in asphalt, concrete and rock
- Cutter wheels for narrow slots with max. depth of 200 mm

Options

- Housings with integrated water jets for effective dust suppression
- Continuously adjustable bearing surfaces to compensate for uneven surfaces
- Housing for use with vacuum extraction equipment
- Rotation units
- Swing bracket



construction | steel industry | special cutters
mining | tunneling | forestry